

DATASHEET

50W Non-flickering DALI/1-10V/Push Dimmable LED Driver

LD50C-PDV



- Flicker-free for whole dimming range
- Stand-by power below 0.5W
- Primary dimming with push button, DALI dimming
- Secondary dimming with 1-10V dimmer
- Dim via a potentiometer
- Protection: short circuit / over temperature/ over voltage
- Dimming level memory at mains restores
- 5-year warranty



[Data]

INPUT	Input voltage range	198-264V AC
	Rated input voltage	220-240V AC
	Input frequency	50Hz/60Hz
	Input DC voltage range	200-240V DC
	Input current	0.3A Max
	Input Surge Current	6.8A 25US
	Power factor	≥0.90 @230V AC (full load)
	Stand-by power	≤0.5W
	Work Efficiency	87%Max. @230V AC (full load)
	Wiring Way	Press-in type terminals, 0.75-1.5mm ²
OUTPUT	Working mode	Constant Current Mode
	Load type	LED
	Flickering rate	below 2% for whole dimming range
	No-load output voltage	68V DC Max
	load output voltage	6-60V DC
	Full-load output power	50W Max
	Output current/Voltage	700mA 6-58V 800mA 6-58V 900mA 6-56V 1050mA 6-48V 1200mA 6-41V 1300mA 6-38V 1400mA 6-36V
	Constant current accuracy	±5%
	Wiring Way	Press-in type terminals, 0.75-1.5mm ²
DIMMING	Primary PUSH dim	Yes (Max. Leading wire length:20M)
	1-10V dim	Yes, port-current <1 mA (Max. Leading wire length:20M)
	DALI dim	Yes (Max. Leading wire length:300M)

DATASHEET

50W Non-flickering DALI/1-10V/Push Dimmable LED Driver

LD50C-PDV

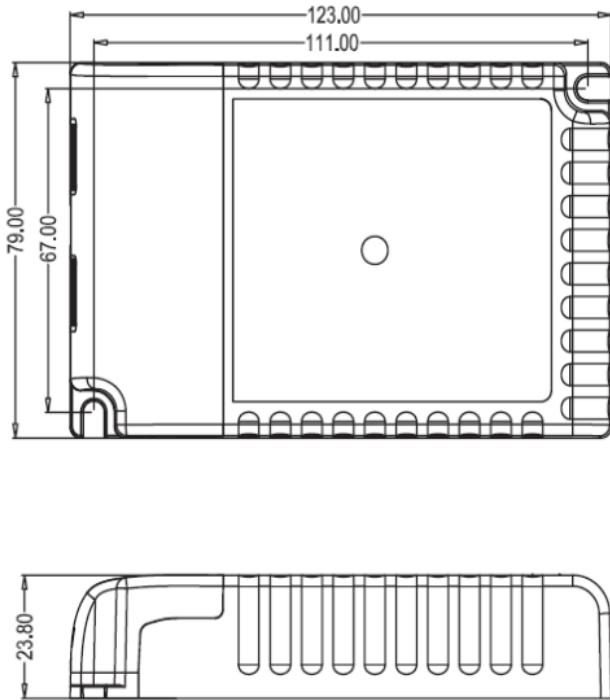
	Primary PWM dim	1-10V port PWM dim (3KHZ-8KHZ)
	Potentiometer	Yes, 100kΩ
ENVIRONMENT	Working temp.(Ta)	-25°C~50°C
	Surface temp.(Tc)	85°C
	Working humidity	85% Non-condensing
	Storage temp.	-40°C~80°C
	Life time	50,000 hours
PROTECTION	Safety	EN61347-1 EN61347-2-13
	EMC	EN55015, EN61000-3-2, EN61547, EN61000-3-3
	Approvals	Semko, CE
	Withstand voltage	IN-OUT:3.75KVAC/5mA/60s
	DALI standard	IEC62386-102, IEC62386-207
	Connection	Input: L, L, N, N, DA, DA Output: SEC (+) SEC (-), 1-10V(+),1-10V (-)
	Abnormal protection	Output short-circuit protection (can query)
	Overheating protection	Overheating protection with auto-reset (can query)
OTHERS	Isolation class	Class II
	Protection class	IP20
	Installation requirement	Stand-alone type
	Dimension size(LXHXW)	123x79x23.8mm
	Permanent Memory	Dimming level memory at mains restores
	Max. Sync numbers for PUSH	15 pcs
	Packing	white box
	Span life	50000h
Note:		

DATASHEET

50W Non-flickering DALI/1-10V/ Push Dimmable LED Driver

LD50C-PDV

[Dimensions]



[Wiring diagram]

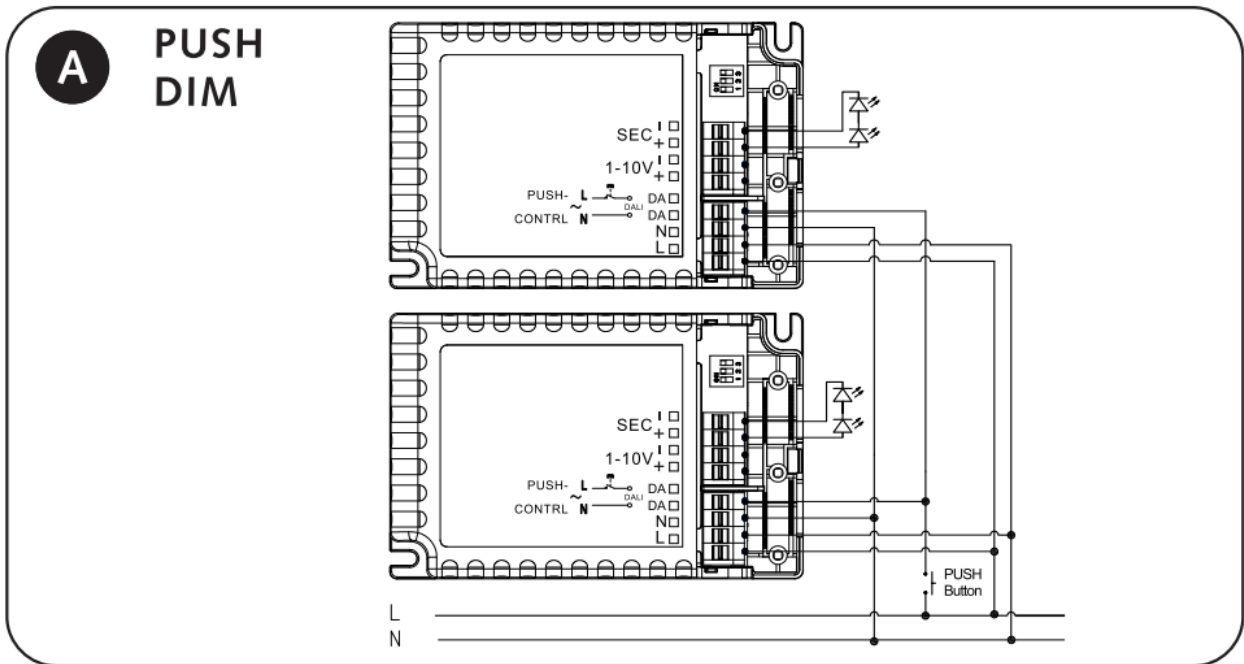


Fig.A Primary Push Dim

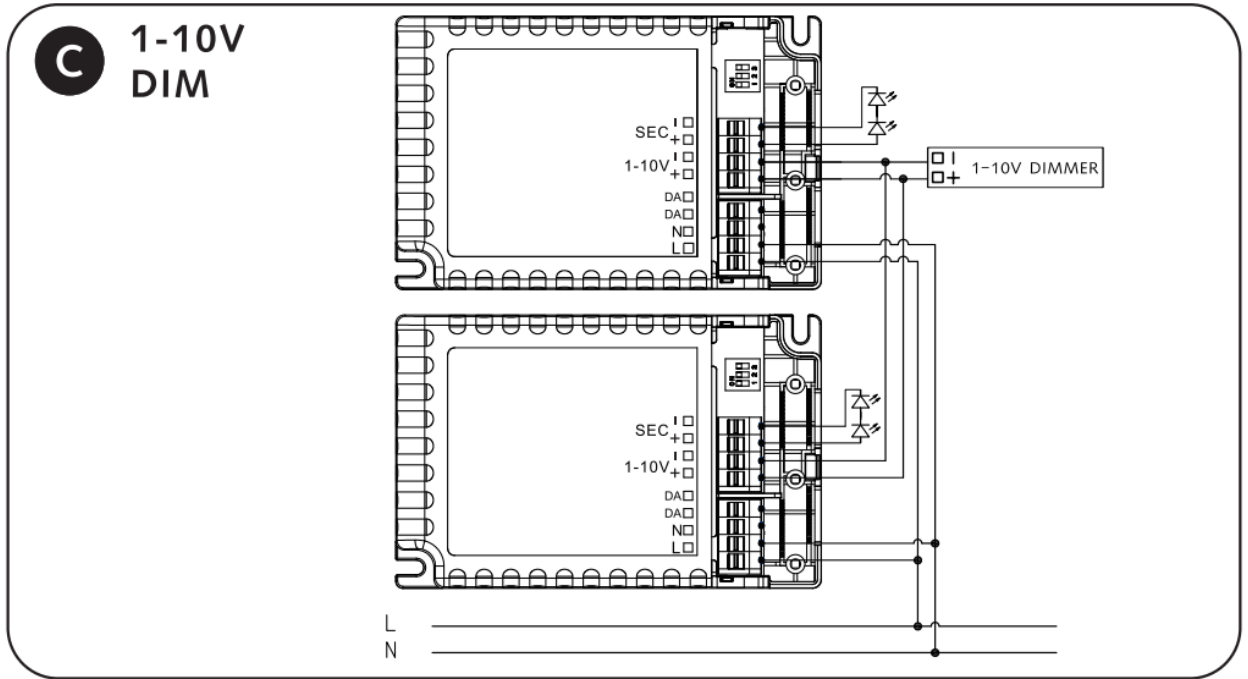


Fig.B 1-10V Dim

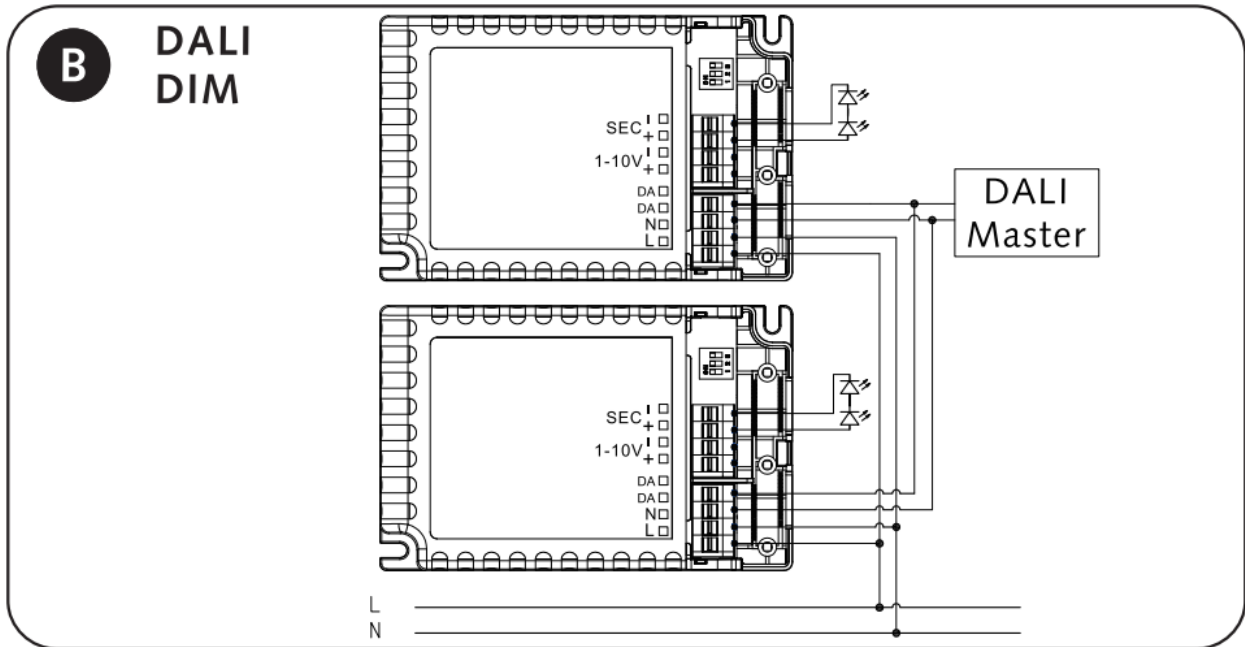


Fig.C DALI dim